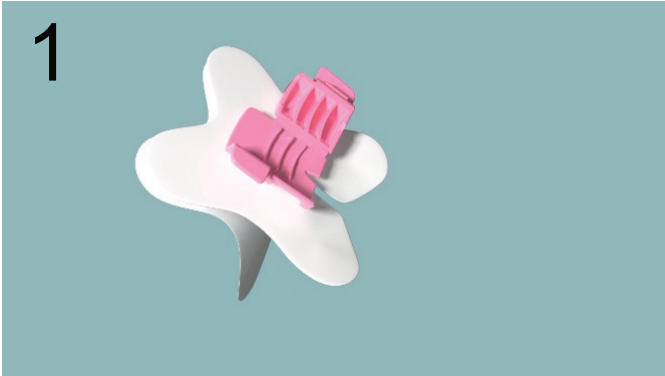
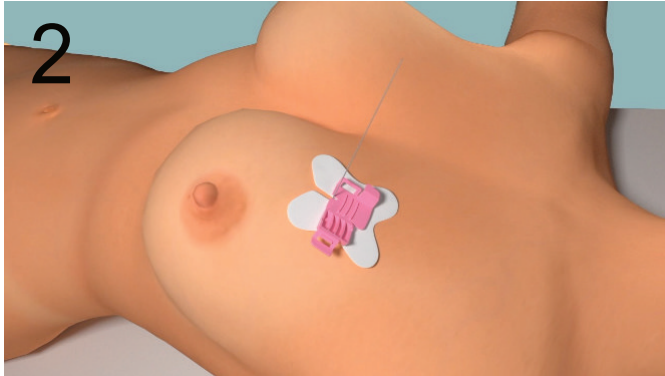


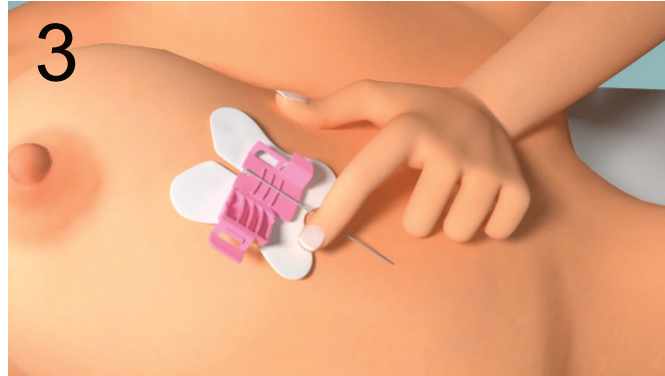
Application



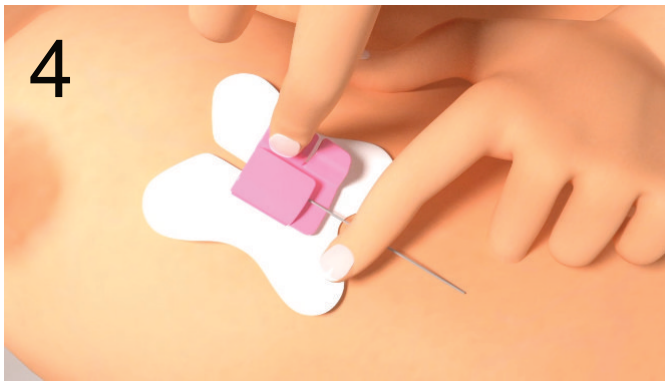
1 Remove the liner from undersurface of the device



2 Place device on the skin so that the wire sits within the V shaped notch at the base



3 Lay the wire over the device and hold down the wire with one finger

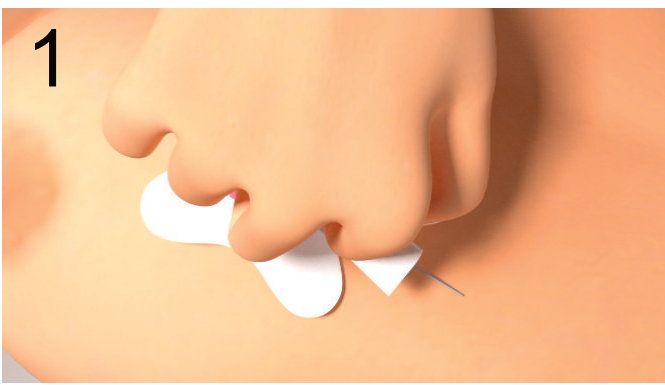


4 Close the device hinge until the clasp snaps shut.

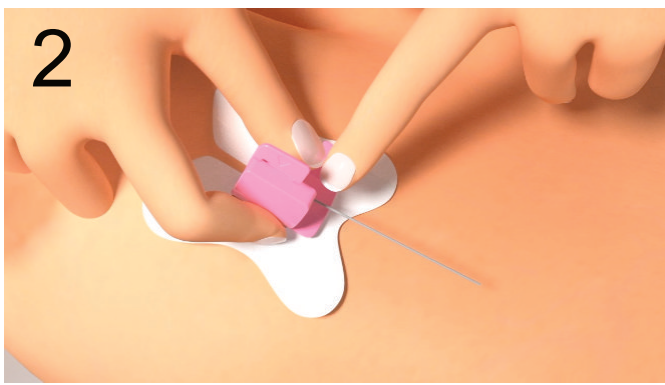


5 Use the cover strips to cover the exposed portion of the wire as needed

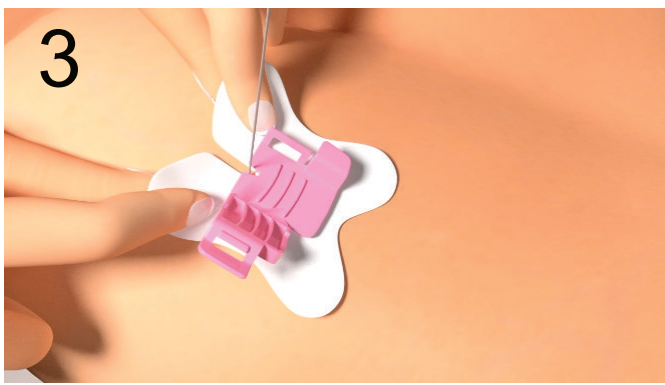
Removal



1 Remove the cover strips



2 Unsnap the clasp so the wire is freed



3 Peel away the WireFix device by grasping the non-adhesive edges near the slot